



Coast Guard Sector Boston Request for Marine Activity Approval

Requests for Notice to Mariners outside of these work areas must be faxed to 617.223.8073 or emailed to LNM@uscg.mil by Tuesday for Thursday publication.

Failure to properly notify the Coast Guard WILL result in project delay.

Company and Administrative Point of Contact:

Caldwell Marine International

POC-AI Perez

Address:

1433 Hwy 34 South, Farmingdale, NJ 07727

Phone: O-732 557 6100 ext. 107/ C-732 331 7455

Fax: 732 736 8910

Project Location: Rhode Island Sound (41 23 29.649N/71 27 39.364W)

Project Description: Submarine Power Transmission Cable Infrastructure Installation

Caldwell Marine International would like to issue a Notice to Mariners for Horizontal Directional Drilling operations that will be carried out in the Rhode Island Sound, approximate location 41° 23 29.649N /071° 27 39.364W. The operation will start on or about Feb 5, 2016 and is expected to last until June 16, 2016. The vessels on location will be the Tug Larry J. Hebert, crew boat Alexis, two barges, 180 foot deck barge and a 160 foot dive barge. The 160 foot deck barge will be set in a 5-point mooring with white surface buoys set out approximately .5 NM from the vessel and the dive barge will be set on a four point mooring with white surface buoys set out approximately .5 NM. The operations will be carried out on a 24-hour schedule. All barges, mooring buoys and the tug will be properly lit for nighttime operations. During the operation the barges will be unable to move from their respected moorings under normal circumstances and request a CPA of .5. Tug will be monitoring VHF channels 16 and 13.

Start Date:
Feb 5, 2016

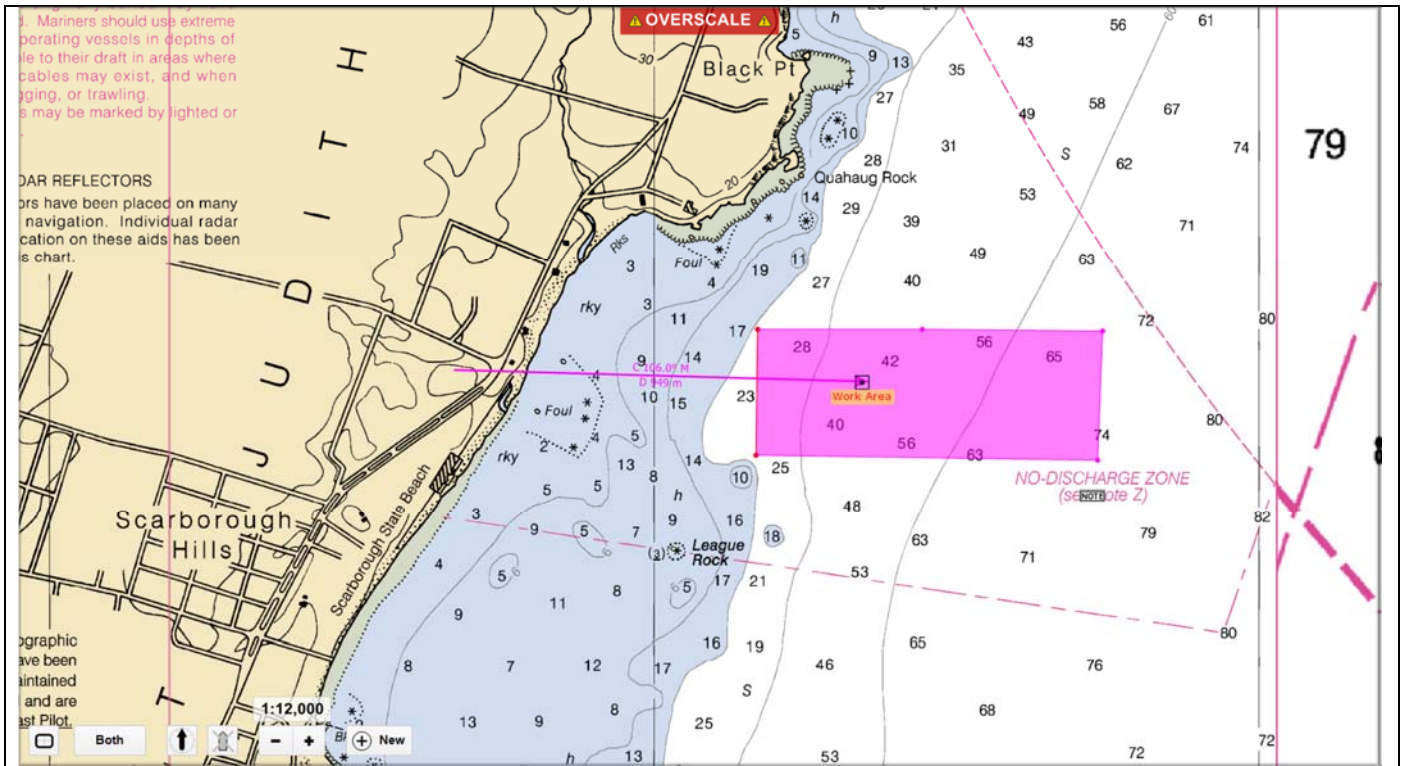
Finish Date:
June 16, 2016

Work Days: (M-F, M-Sat,
etc.) 7 Day per Week, (M-
Sunday)

Work Hours:
24 hour Operations

Position of Equipment (detailed physical description):

See attached Chartlet



Vessels on Scene (Include Vessel name, description, length, beam, State Registration number):

- Tug Larry J. Hebert, 86' x 28' #639035 call sign WDF 5953
- Crew boat Alexis, 55' x 16' # 1073420 call sign WDA 6065
- Deck Barge 2002 180' x 60' x 10.5' # 1149659
- Dive Barge 860 160' x 54' x 12' # 541770

24-hr On-Scene

Point of Contact: Paul Larrabee 732.620.3938

12-28-15